

Research Infrastructure

in the EFZN Line of Research Solar and Wind Energy

Cluster Plants for Coatings in Photovoltaics Research

Universität Oldenburg



Photo: n.n.

[Find out more](#)

Large turbulent wind tunnel

ForWind, Universität Oldenburg

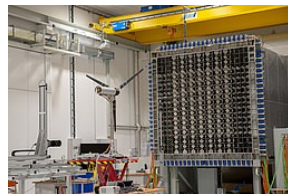


Foto: © ForWind, Universität Oldenburg

[Find out more](#)

High-performance computer for meteorology and flow calculations

ForWind, Universität Oldenburg

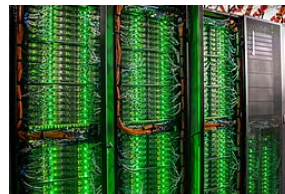


Photo: © ForWind, Universität Oldenburg

[Find out more](#)

Laboratory for Integrated Solar System Technology (ISS)

ISFH, Hameln



Photo: © ISFH, Hameln

[Find out more](#)

Laboratory "Active Distribution Networks"

TU Clausthal

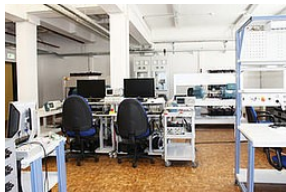


Photo: © EFZN

[Find out more](#)

Laboratory for Nano and Quantum Engineering (LNQE)

Universität Hannover



Photo: © LNQE

[Find out more](#)

Physics Laboratories

TU Clausthal



Photo: © EFZN

[Find out more](#)

Solar Cell Calibration Laboratory of the Calibration and Test Centre (ISFH-CalTeC)

ISFH, Hameln



Photo: © ISFH, Hameln

[Find out more](#)

Industrial processing tools (ISFH-SolarTeC)

ISFH, Hameln



Photo: © ISFH, Hameln

[Find out more](#)

Test Centre for Bearing Structures of Wind Energy Plants in Hannover-Marienwerder (TTH)

Universität Hannover



Photo: n.n.

[Find out more](#)

Underwater Technology Centre Hannover (UWTH)

Universität Hannover



Photo: n.n.

[Find out more](#)

Wave Channel and Pool for Offshore Wind Energy Plants

Universität Hannover



Photo: n.n.

[Find out more](#)

