

# Blue Energy

## Blue Accelerator

General presentation Oct  
2019 ENG

# Blue Accelerator

## *Maritime Innovation and Development Platform*

- Living lab for tests in real life sea conditions
- Partners:



- Funding: ERDF, Flemish Government, Province West Flanders





**Blue Accelerator**  
*Maritime Innovation and Development Platform*

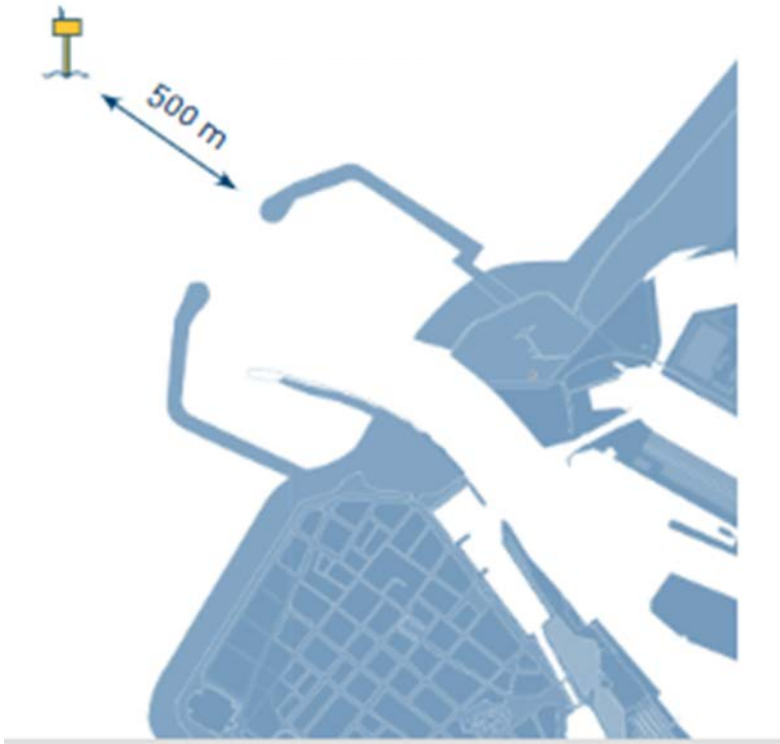




# Blue Accelerator

## *Maritime Innovation and Development Platform*

### Blue Accelerator

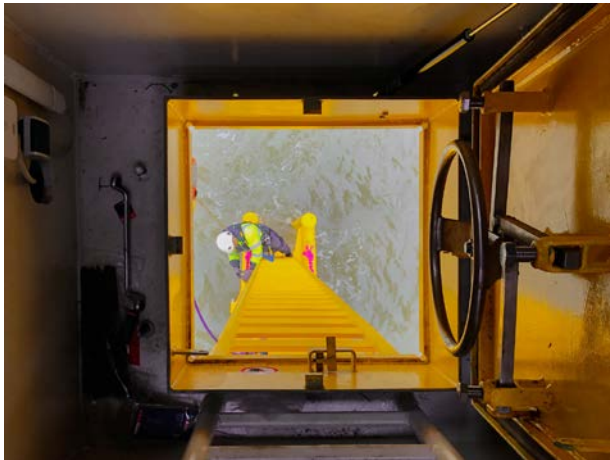


- 500m off the coast of Ostend
- Target users  
knowledge institutions  
businesses (SMEs, large industries)  
→ both Belgian and worldwide
- Multifunctional  
wave energy  
corrosion  
abrasion and erosion  
marine growth  
meteo  
drones  
...
- Exploitation  
under preparation  
open, equal access  
clear user fee  
15 year operation



# Blue Accelerator

## Maritime Innovation and Development Platform



- **USPs**

Open and equal access guaranteed by public ownership

Fast-track procedure for users

500 m off the port of Ostend  
→ fast and easy access

Proximity to a large blue growth network and expertise:

- Belgian Offshore Cluster, De Blauwe Cluster, VLIZ, GreenBridge, Flanders Maritime Laboratory, Ostend Science Park,....

Financing opportunities



# Blue Accelerator

## Maritime Innovation and Development Platform



©NEMOS



- **Role POM West-Vlaanderen:**
  - Realization and owner of the test platform
  - Project coordination
  - Front office role
  - Communication
- **All consultations, questions and info:**
  - [eddy.dewinter@pomwvl.be](mailto:eddy.dewinter@pomwvl.be)
  - +32 59 36 99 30
  - +32 475 68 82 14



# Blue Accelerator

*Maritime Innovation and Development Platform*

Backup slides







500m Outside port of Ostend



 VHF DCS Radio  
IP-Phone  
4G Secure network  
WIFI

 Test platform & area  
Sensors Blue energy  
Hydrometeo Paint & steel  
Communication Drones ...

 Crane 1,6 T | 0,5T from vessel  
Hatch for hoisting



 Closed hatch with lock  
CCTV on boatlanding  
Sign No Access  
AIS Monitoring

51° 14.784'N 2° 55.157'E

 7m x 3m Topdeck  
72m<sup>3</sup> Volume house



 CCTV inside  
CCTV outside  
Navigation light  
Foghorn

 Diesel generator  
24VDC Solar panels  
230VAC Wind Turbine  
Battery pack 12,5kWh



## Power house



7,1m x 3,1m x 3,3m



- 24VDC/230VAC/  
400VAC
- Main supply cabinet

## Safety equipment on board

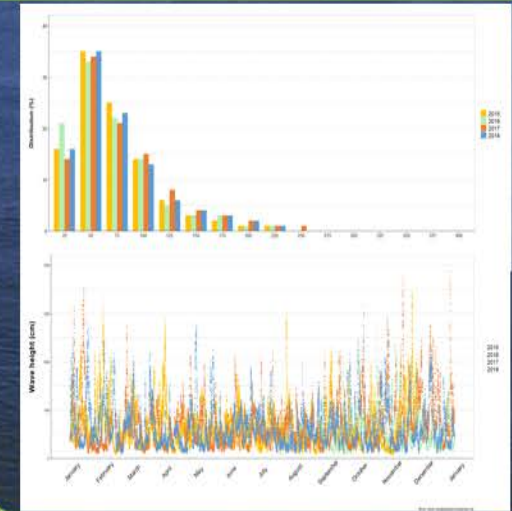


- Fire extinguisher
- First aid kit
- Communication

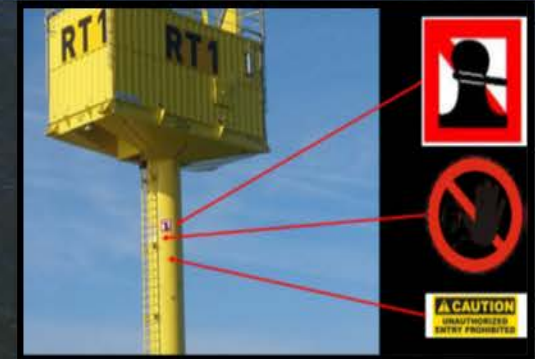
- Life buoy
- Rescue stretcher
- Rappelling Hoist



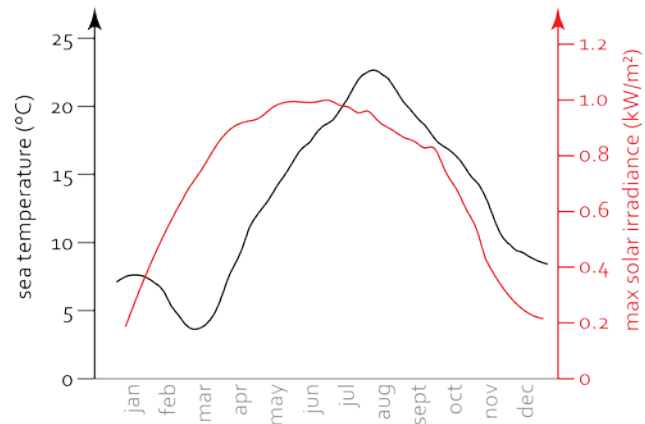
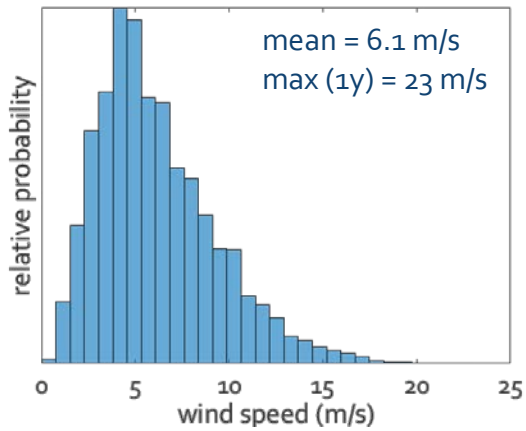
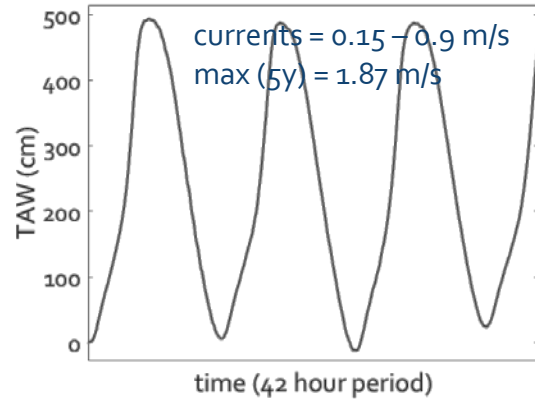
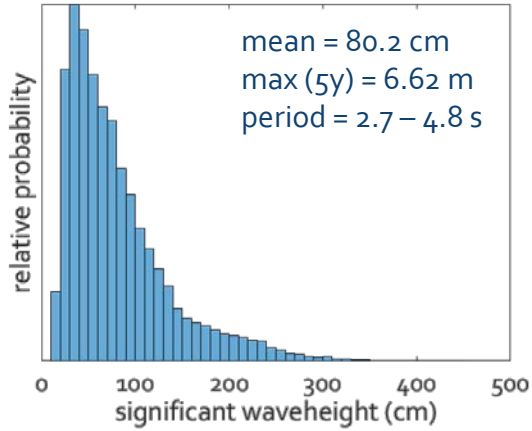
## Historical wave conditions



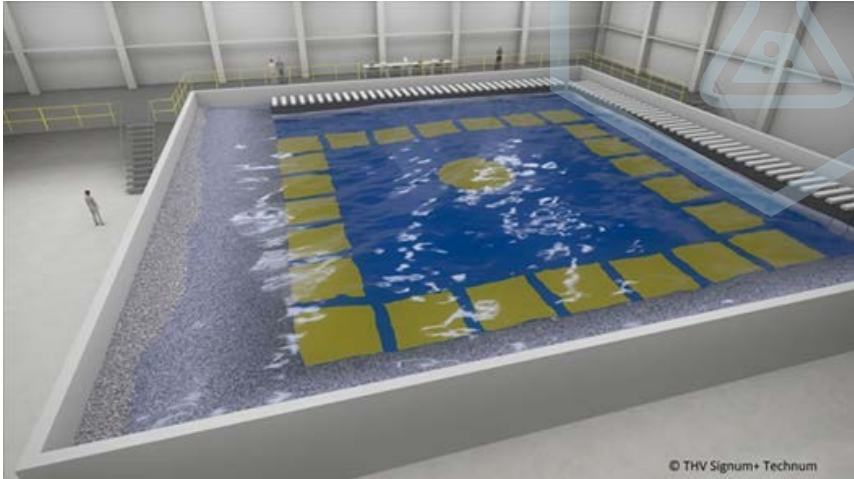
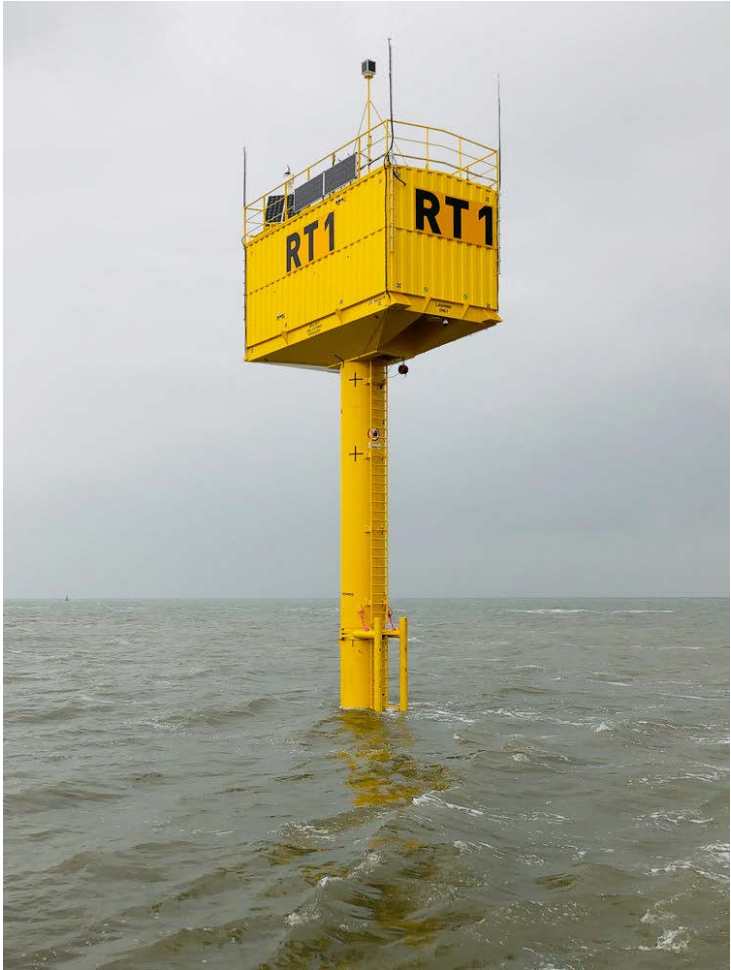
## Access regulations



- GWO-certificates
- ENSOR crewlist
- STANDBY vessel



# Chain of test facilities in a blue growth hub



# GreenBridge



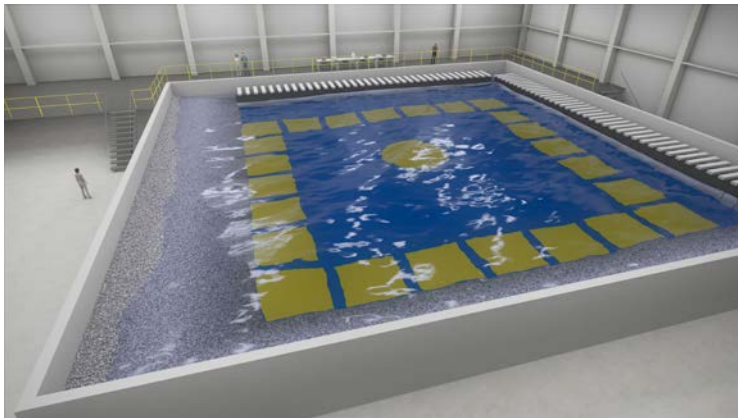
- Incubator
- Focus blue growth



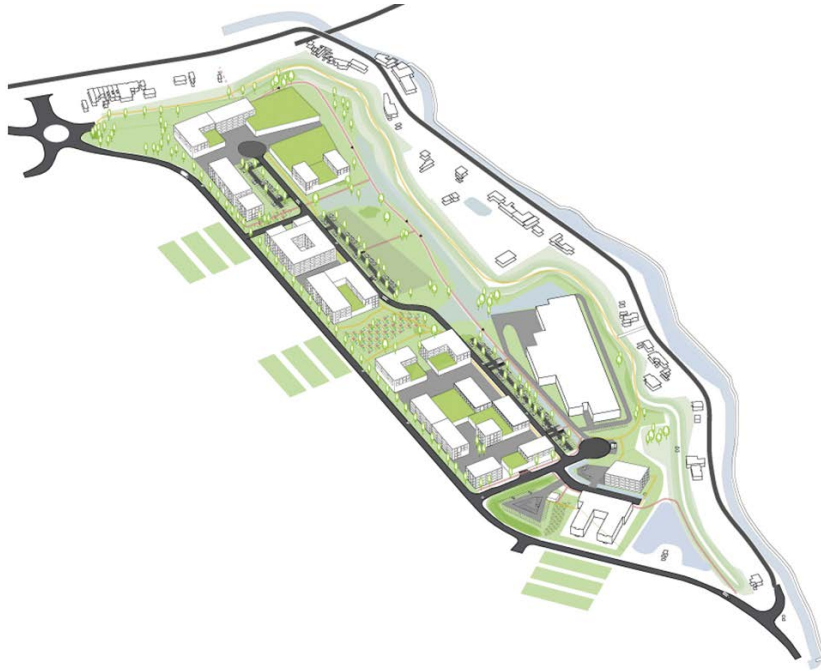
# Flanders Maritime Laboratory



- New onshore test infrastructure
- At Ostend Science Park/GreenBridge
- Operational: 2020 -2021



# Ostend Science Park



- Science park:
  - R&D intensive and innovative products and services in blue economy
  - Bridge between companies and knowledge institutions
- Reconfirmation of Ostend as hightech hub in blue economy
- Initiative POM West Flanders, University of Ghent and Port of Ostend

